

STONECREST TRANSIT HUB DEVELOPMENT & DESIGN



WHAT IS A TRANSIT HUB?

Transit hubs provide safe, convenient places for passengers to wait and transfer between buses with enhanced amenities and services. Transit hubs also connect MARTA's bus services to other travel modes. This can include walking, biking, MARTA Mobility, and other first/last mile options such as carpooling and ridesharing (e.g. Uber and Lyft).



SERVICE AREA

MARTA has committed to constructing a transit hub at The Mall at Stonecrest. The mall and surrounding commercial area represents the largest activity center in the City of Stonecrest and is served by four popular MARTA routes (Routes 86, 111, 115, and 116). There are several bus route connections, but no centralized infrastructure to facilitate efficient bus-to-bus transfers.

WHERE ARE WE IN THE TRANSIT HUB DESIGN PROCESS?

MARTA has completed the following activities for the Preliminary Design Phase

- **Environmental Permitting:** The project was reviewed by the Federal Transit Administration (FTA) for compliance with National Environmental Policy Act (NEPA) and Section 106 historic preservation requirements, and was found to have no potential negative effects on the surrounding area. An Environmental Site Assessment (ESA) for the transit hub location found no evidence of negative environmental conditions or contamination.
- **Developed Preliminary Design Plans:** 30% architectural and engineering design for the project has been completed. This stage of design includes:
 - » Layout of the bus loop, bus stops, and kiss/ride areas
 - » Service building design
 - » Landscape design
 - » Site drainage design

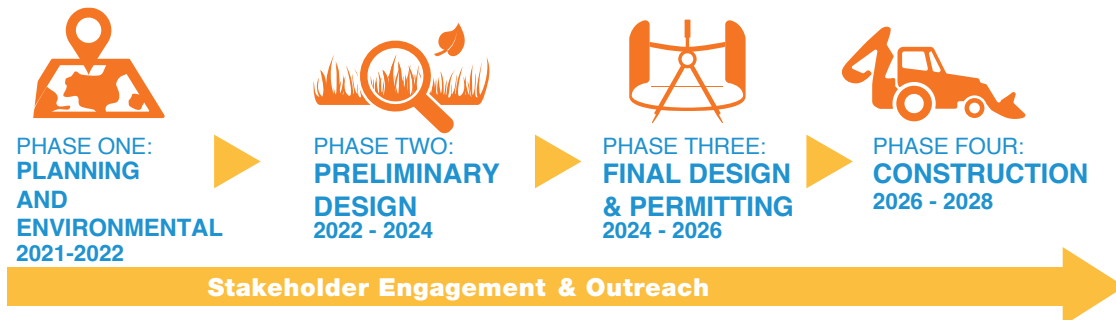
NEXT STEPS

The project will be moving into the final design phase, where MARTA will select a consultant design team to develop 60%, 90% and 100% architectural and engineering. Following final design, MARTA will award a contract for construction to build the transit hub.



TRANSIT HUB SERVICES AND AMENITIES:

- Shelter from weather
- Seating
- Restrooms
- Bike racks
- Real-time bus arrival information
- Breeze card kiosks
- Vending machines
- Dedicated community recreation space
- MARTA PD Office



CONTACT:

William Lotharp, Jr.

Project Manager I

E: wlotharp@itsmarta.com

P: 404.848.4178